

# Napa Fire Complex 2017: Disaster Recovery



Karen Relucio, MD

Health Officer/Public Health Director  
Napa County HHSA  
HOAC Fall Semiannual Meeting Oct 2018



# Disaster Recovery Perspectives

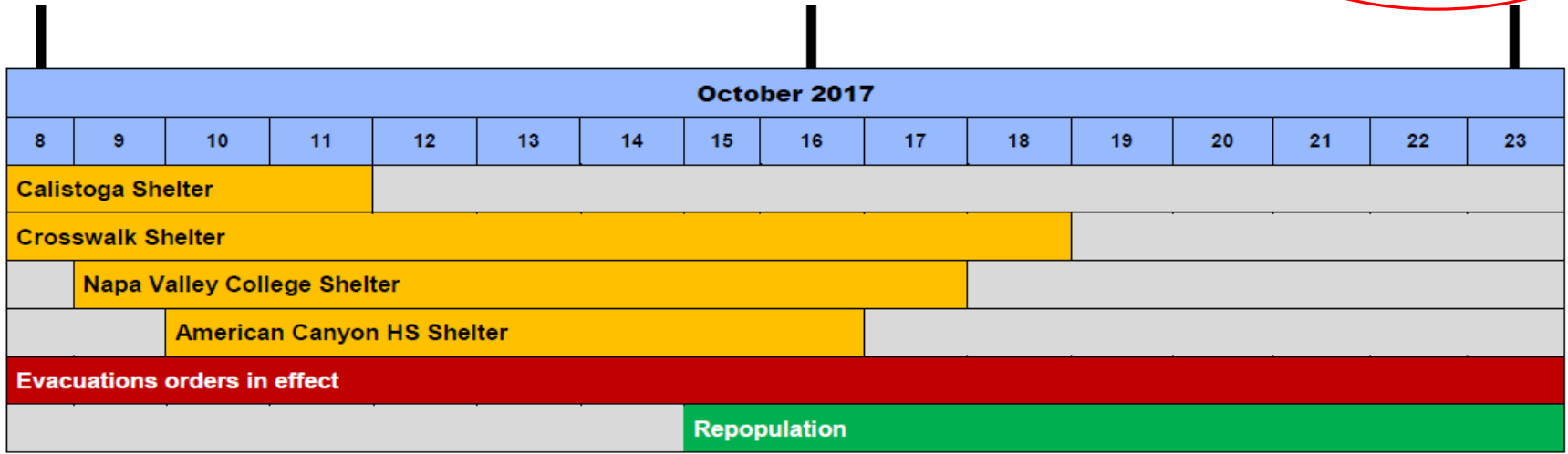
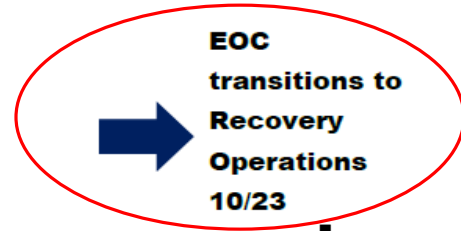
- Recovery Operations Center (ROC)
  - Medical Health and Health Officer involvement
- County post-disaster consequences not part of the ROC
- Health Officer experience



**Fires start  
EOC Opens  
10/8**



**Local  
Assistance  
Center Opens  
10/16**



**Evacuation of  
Veterans Home  
patients  
10/10 – 10/11**



**Repopulation of  
Veterans Home  
patients  
10/17 – 10/24**



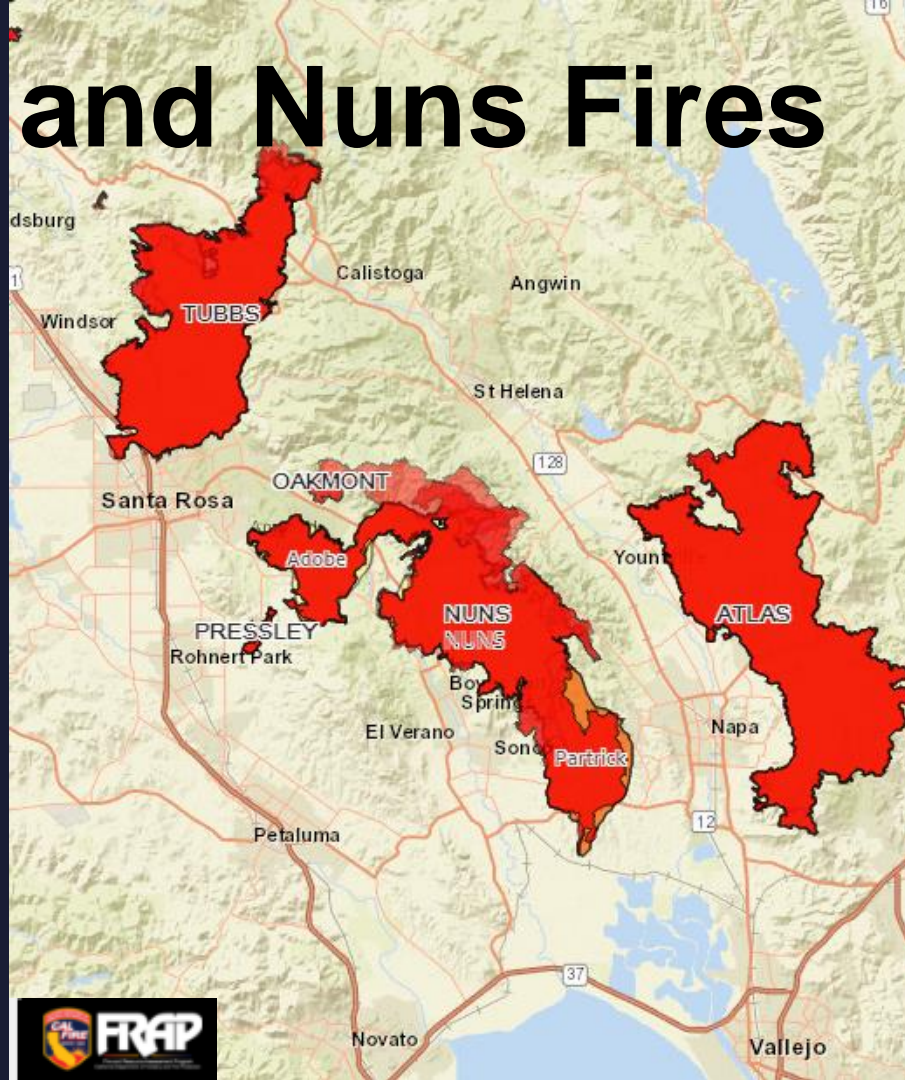
# Atlas, Tubbs and Nuns Fires

**Acres burned:** 144,987

**Structures destroyed in Napa County:**

- Businesses: 36
- Outbuildings: 480
- Residences: + 705

1,221





# Recovery Operation Center (ROC)

Responsible for carrying out the critical recovery functions necessary to:

- Collect and analyze data
- Control deployed field assets
- Make decisions that protect life and property
- Ensure continuity within the County organization
- Determine and track recovery-related costs
- Disseminate decisions to all concerned agencies and individuals



# Recovery Operation Center (ROC)

10/24/2017

Incident Name	
2017 Napa Fire Complex	
Operational Period	
From	To
12/9/2017 0000	12/16/2017 0000

**Incident Commander**  
Kevin Twohey

Health Officer  
Karen Relucio

Safety Officer  
Dave Peters

PIO/Liaison Officer  
Molly Rattigan

Legal  
Jennifer Yasumoto

A-Rep: Cal OES  
Memoree McIntire

**Operations**  
Chief John McDowell

**Planning Section**  
Chief Jennifer Palmer

GIS/Data Unit  
Pat Kowta

**Logistics Section**  
Chief Jeff Brooner

Personnel Branch  
Heather Ruiz

**Finance Section**  
Chief Tracy Schulze

Deputy  
Bob Minahan

Insurance  
Kerry Whitney

**Roads & Watershed**  
Steve Lederer

**Roads & Infrastructure**

Steve Stangland

Chipping

**Domestic Watershed**

Phil Miller

Milliken

Kimball

Rector

Capell

**Napa River Basin**

Rick Tomasser

**Erosion**

Patrick Ryan

**Debris Management**  
Christine Secheli

**Abatement**

David Gludice

**Debris & Ash**

John Kara

GIS

Matt Lamborn

ROE

**Building & Reconstruction**  
Vin Smith

**Public Assistance**

Reconstruction

**Medical Health**  
Brian Henriksen

**Medical**

Shaun Vincent

**Mental Health**

Bill Carter

**Health**

Jennifer Henn

**LAC**  
Mitch Wippen

**COAD**

Kelle Kroll

**Interim Housing**  
Mitch Wippen

**Call Center**

Shannon McDermott



# Recovery Operations Center (ROC)

## 10/24/2017

### Short-Term Objective(s):

1. Restoring utilities and basic services
2. Establish and staff LAC
3. Apply for State and Federal assistance programs
4. Conduct hazard mitigation analyses
5. Identify and remove debris and residual hazards
6. Determine recovery costs associated with response and recovery

### Long-Term Objective(s):

1. Reconstruction of public and private facilities and infrastructure
2. Planning and rebuilding of housing
3. Implementation of waivers, zoning changes, and other land use legislation to promote recovery
4. Provision of long-term assistance to displaced families
5. Coordination of long-term social and health services delivery
6. Restoration of the local economy to pre-disaster levels
7. Integration of mitigation strategies into rebuilding efforts
8. Recovery of disaster-related costs for infrastructure restoration through State and Federal assistance



# Recovery Operation Center (ROC)

## Roads & Watershed Branch

### Roads

- All guardrails have been replaced
- 54 miles of County roads cleared of hazard trees and debris
- Last phase of major tree removal and road repairs will be done this month.

### Watershed

- Erosion control and tree removal completed at a few reservoirs





# Recovery Operation Center (ROC)

## Building & Reconstruction

- Implemented Policy for Rebuilding
- Urgency Ordinance & Permitting Guidelines
- Operated Pop Up Recovery Center (PURC)
- PBES Permit Center operating at 10% to 20% greater volume
- Seeing major influx of reconstruction permits (125 requests with 62 permits issued)



# Recovery Operation Center (ROC)

## Local Assistance Center (LAC) Branch

### LAC

- Opened October 16<sup>th</sup>
- Operated for 48 days
- 4,786 total visits by 3,334 unique clients
- Assisted Napa residents in accessing \$7M+ in public and non-profit aid



# Recovery Operation Center (ROC)

## Interim Housing Branch

### Interim Housing

- FEMA Coordination for 38 Households, 6 remain on subsidies
- Call Center activated to determine un-met or unreported need(s)
- Call Center contacted 1,247 fire-affected residents



# Recovery Operation Center (ROC)

## Medical Health Branch

### Medical Unit

- Mutual Aid Reconciliation of paid medical health resources:  
Ambulance transport alone costed about 700 K.

### Mental Health Unit

- Community Partner Training to provide MH first aid for people in distress

### Health Unit

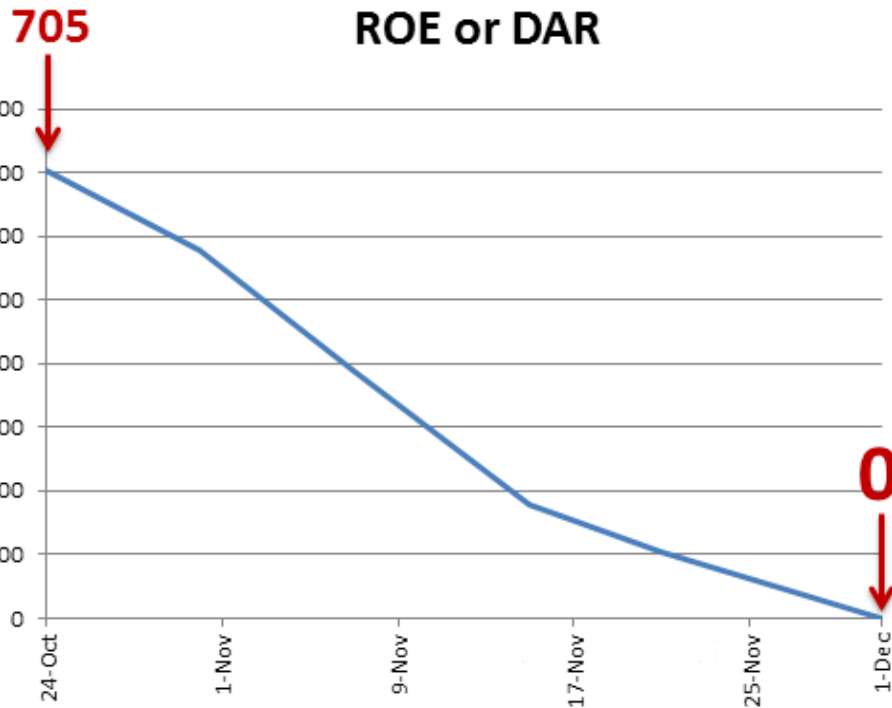
- Ash and debris exposure messaging
- Epidemiological analysis of fire-related impacts (partnering with UC Davis)
- Air Quality Monitoring of debris clean up sites



# Recovery Operation Center (ROC)

## Debris Management Branch

### Red-Tagged Properties with unfiled ROE or DAR



### Planning Dept. and Environmental Health Teamwork

#### US ACE Properties (Release of Entry)

- Total ROE 437
- Total properties returned 435
- In process 2

#### Private Debris and Ash Removal (DAR)

- Total DAR 198
- Total sign offs 195
- 3 properties - one awaiting soils testing and two still clearing

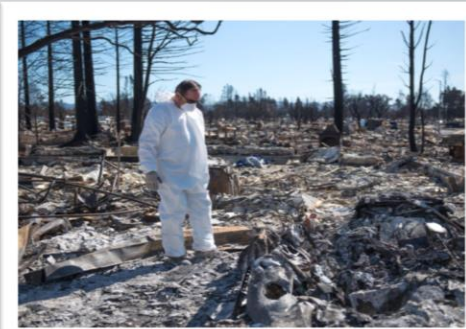


# Recovery Operation Center (ROC)

## Debris Management Branch

### Fire Debris Issues

- California standards for heavy metal levels stricter than US standards
- Delays in local baseline heavy metal standards
- Declared baseline lead level was >2000 based on some properties with pre-existing high levels



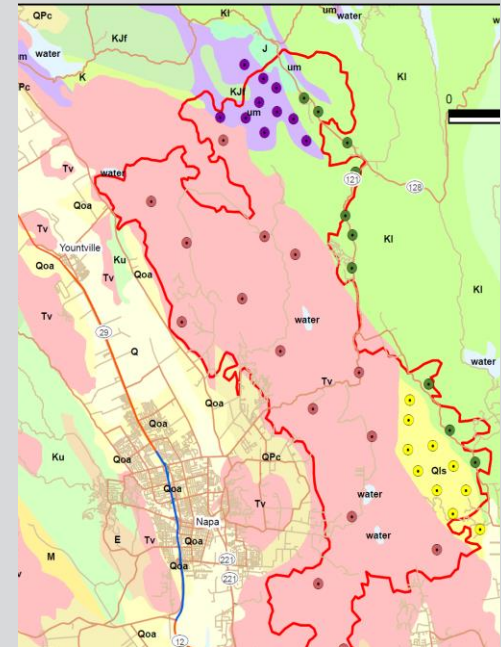


# Recovery Operation Center (ROC)

## Debris Management Branch

### Fire Debris Issues

- High levels Pb/As in deeper soil: likely pre-existing condition
- Site specific testing
- Angry property owners seeing cleaned property without clearance letter-when to rebuild?
- Dig large pond to clean soil or return property with high Pb/As levels? Lack of guidance!





# Recovery Operations Center (ROC)

## Short-Term Objective(s):

- ~~1. Restoring utilities and basic services~~
- ~~2. Establish and staff LAC~~
- ~~3. Apply for State and Federal assistance programs~~
- ~~4. Conduct hazard mitigation analyses~~
- ~~5. Identify and remove debris and residual hazards~~
- ~~6. Determine recovery costs associated with response and recovery~~

## Long-Term Objective(s):

1. Reconstruction of public and private facilities and infrastructure
2. Planning and rebuilding of housing
- ~~3. Implementation of waivers, zoning changes, and other land use legislation to promote recovery~~
4. Provision of long-term assistance to displaced families
5. Coordination of long-term social and health services delivery
6. Restoration of the local economy to pre-disaster levels
7. Integration of mitigation strategies into rebuilding efforts
8. Recovery of disaster-related costs for infrastructure restoration through State and Federal assistance





# Health Equity Issues in Recovery

- LAC and Nonprofit Data was important in assessing impacts
- Non measured issues: Language translations of technical documents (ROE and DAR)

# Local Assistance Center Surveys

As a result of the wildfires...

- **33** people lost their jobs
- **325** people lost wages
- **179** people (36%) said they could not afford to pay rent or mortgage next month
- **309** people (63%) listed financial concerns as a top worry

**66% of those surveyed at the LAC said that the wildfires affected their employment**



# Housing Impacts

In an already tight housing and rental market, the wildfires:

- Destroyed **611** homes
- Damaged **94** homes



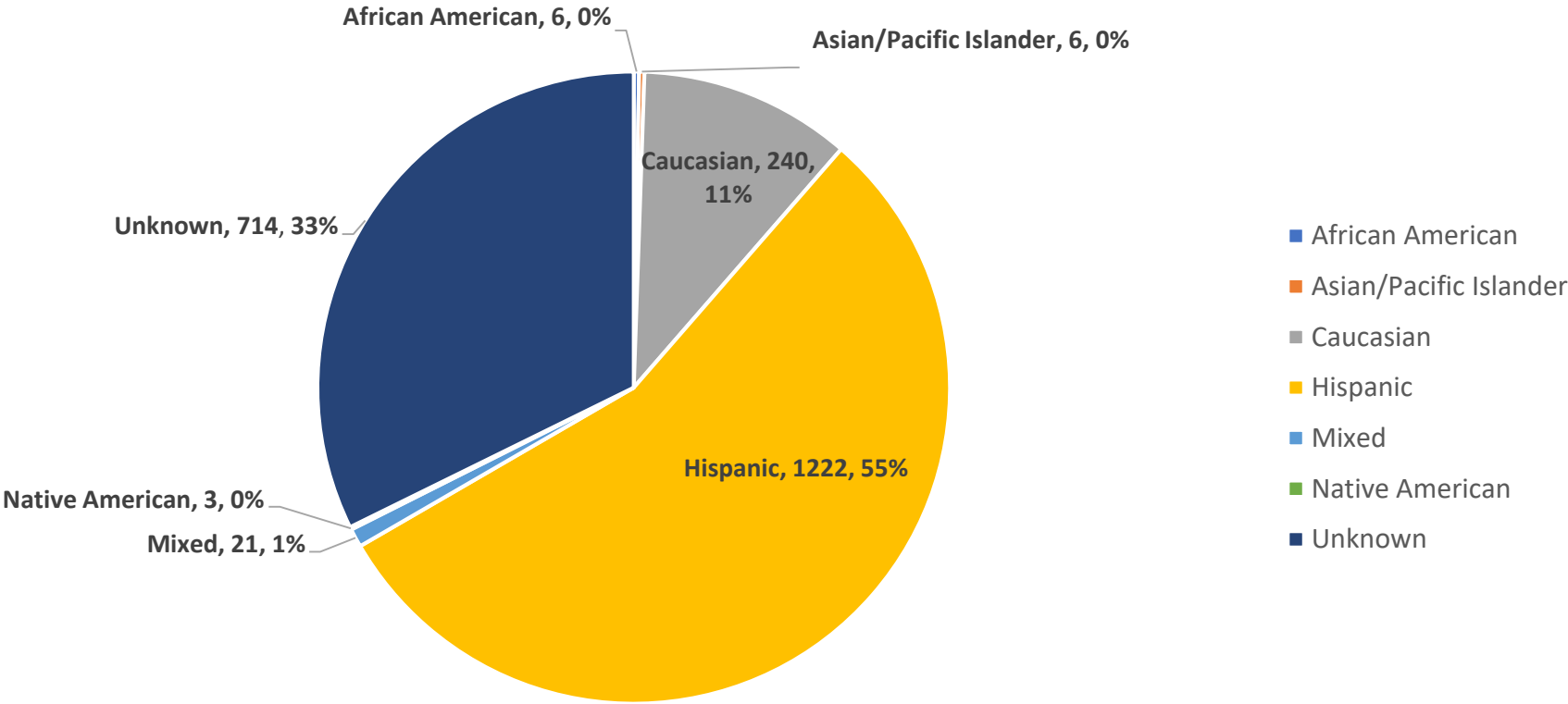
# Local Assistance Center Surveys- Housing

- **73%** of households that experienced damage were owners
  - 10% had no insurance
  - 42% had enough insurance to rebuild
  - The remainder may be underinsured
- **28%** of households who experienced damage were renters
  - 38% of renters were uninsured
- **99** households were living in temporary accommodations
  - Hotels (14), RV (4), assisted living (1), homeless shelter (2)

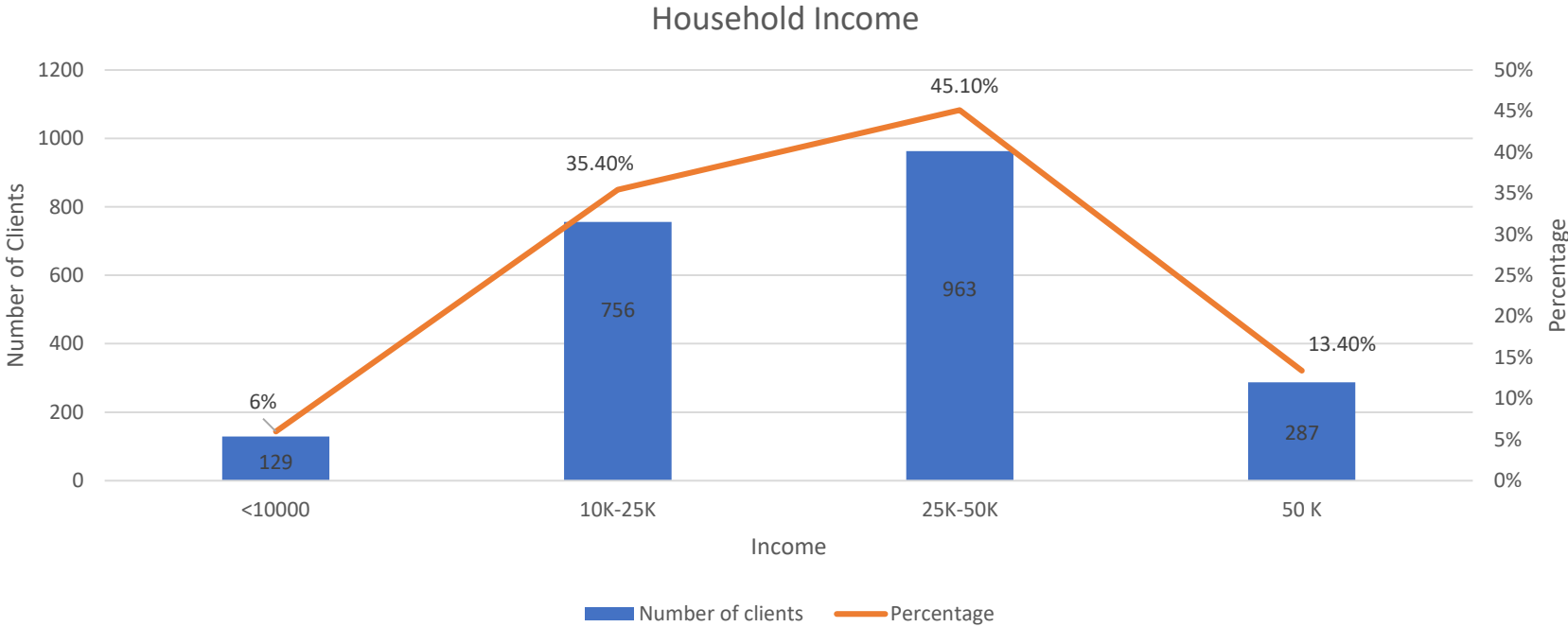
# Further Tightening of the Housing Market

- Vacancy rate in Napa was at 2% or lower before the wildfires
- Following the fires in October, the typical asking rent increased by **23%** in Napa from \$2,509 to \$3,094.

# Population Served by Nonprofits by Race

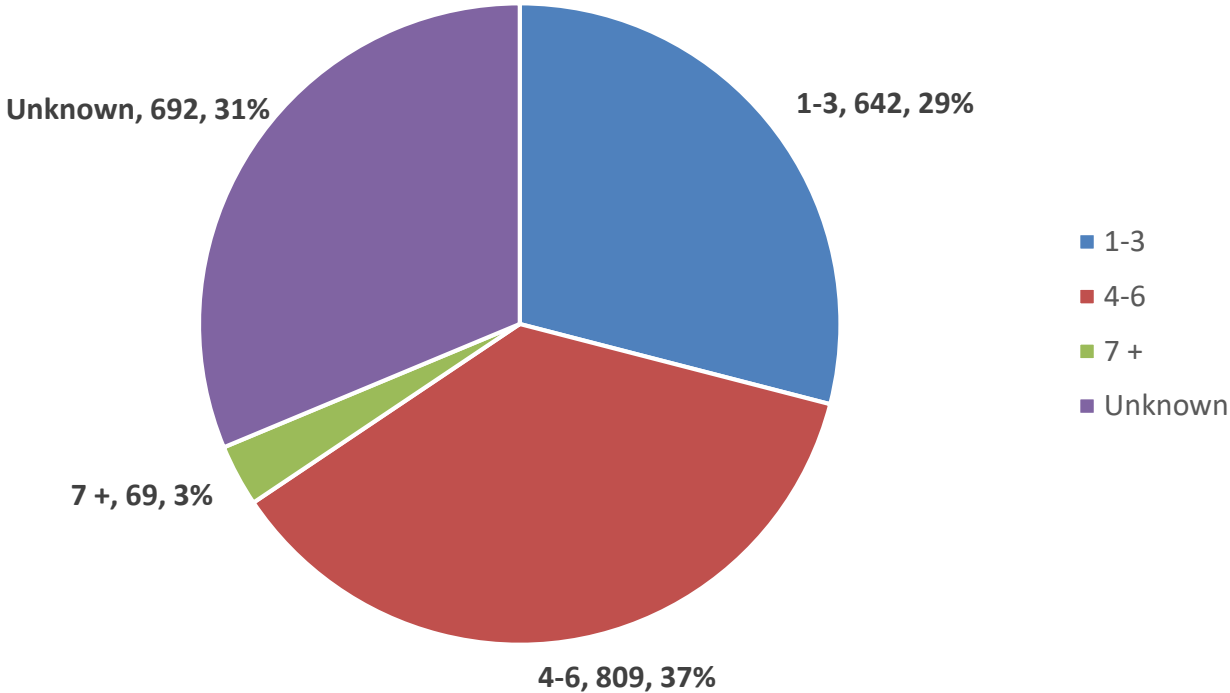


# Average Household Income Served by Nonprofits





# Family Size of Affected Households





# Lessons Learned

- Undocumented residents did not show up to the LAC due to federal presence (FEMA and National Guard) and immigration fears
- Nonprofits were key partners for distributing financial assistance to undocumented residents and are highly involved in the Community Organizations Active in Disasters (COAD)
- Evidence of health equity impacts around recovery aid due to immigration fears



# County Post-disaster Consequences

- Lost 2% of property tax revenue (\$730 million) for a \$3 million hit to general fund
- Another \$6.5 million spent for infrastructure repair and debris removal
- County staff spent 40,000 hours doing wildfire-related work, with 13,000 hours of overtime
- Other fiscal impacts: Costs to build a new jail destroyed by 2014 earthquake \$128 million, IHSS maintenance of effort, planned COLA



# Other Post-disaster Consequences

- 4 million dollar cuts across HHSA for next 3 years
- New BOS/CEO leadership
- Departure of 4 department heads, 2 senior managers (including County PIO)
- Public Health lost nearly half our small nursing workforce; need to hold positions vacant for salary savings



# Health Officer Post-disaster Experience

- Re-entry fatigue
- Negative impacts on health equity: housing, food insecurity, income, trauma
- Adapting our CHA to post-disaster issues: food insecurity and disaster; trauma
- Debris management health concerns and inability to completely disconnect
- Distrust at leadership level
- My job search



# Building Back Resiliency

- Leaning forward: ACES community education and adding disaster food analysis to the CHA
- Affordable housing projects pipeline moving faster
- Trying to incorporate mindfulness meditation personally and with the workforce
- Science and Practice of Resilience Workshop: Greater Good Science Center at UC Berkeley put an end to my job search



# Lessons Learned

- Being involved in the ROC kept efforts organized
- Non-governmental partnerships are crucial for complete community recovery
- Data collected during recovery efforts informs future disaster events
- Disasters may lead to forward movement to improve social determinants of health
- Self-care and mindfulness crucial for resiliency and survival